



PROJECT		REF		REV	ITEM CODE	
LOCATION		DATE			PAGE	

SANITARY WARE SPECIFICATION SHEET

Item Descriptions	Grohe (Germany) "Eurosmart Cosmopolitan E" Chrome plated wall mounted Infra-red electronic thermostatic temperature control basin mixer with swivel cast spout projection 287mm ; Nominal flow rate 4.3 l/min in WELS Grade 1 ; Registration No. TM 19-0001	<p>Illustration/ Drawing</p> 
Model	36332000 (Mixer) 40.2156.000 (Aerator)	
Finish	Chrome Plated	
Brand / Country of Origin	GROHE (Germany)	
Source	Acme Sanitary Ware Co. Ltd Mr. Eric Wong/ Mr. Don Yuen	
Contact Tel/Fax	(852) 2388-7171 / (852) 2710-8012	
E-mail	acme@acmesanitary.com.hk	
Website	www.acmesanitary.com.hk	

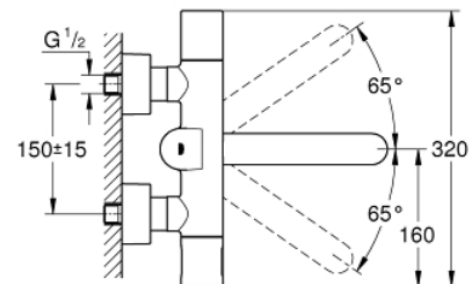
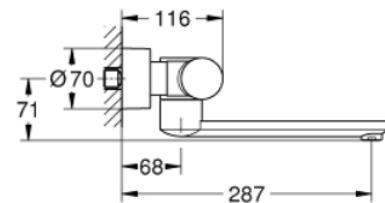


Dynamic flow pressure (kPa)	50	150	250	350	500
Flow rate (l/min)	3.97	6.88	7.82	7.84	8.47

Eurosmart Cosmopolitan E

Infra-red electronic wall basin mixer

with thermostatic temperature control
with infrared sensor for bi-directional communication
for monitoring, configuration and service purpose
6V lithium-battery, type CR-P2
battery lifetime: approx. 7 years (150 actuations a day)
3 modi to start mixer: hand-hand, hand-body or body-body reflection
laminar mousseur 9 l/min
non-return valve
dirt strainers
temperature scale handle with safety stop at 38°C
swivel cast spout
219 mm
projection 287 mm
swivel range stop at 130°
multistage battery status display
7 pre-set programs:
auto flush
thermal disinfection
cleaning mode
additional functions and precise settings
by remote control 36 407
CE approved
noise classification 1 in accordance with DIN4109
minimum pressure 1.0 bar



reddot design award
winner 2011

註冊號碼 (Registration No.): TM 19-0001



自願參與用水效益標籤計劃 - 水龍頭
Voluntary Water Efficiency Labelling Scheme - Water Taps



茲證明
This is to certify that

將下列水龍頭在本計劃內註冊：
has registered the following water tap under this scheme :

牌 子 / Brand	:	GROHE
型 號 / Model	:	36332000 + 40.2156.000
種 類 / Type	:	Mixing
原產地 / Country or Region Origin	:	Germany

在用水效益標籤上展示的標誌 <i>Symbolic Presentation on the Water Efficiency Label</i>	:	 滴水點 <i>Water droplet(s)</i>
用水效益級別 <i>Water Efficiency Grade</i>	:	1
耗水量 <i>Water Consumption</i>	:	4.3 公升/分鐘 <i>litres/minute</i>

簽發日期：
Date of Issue:

11 January 2019



水務署
Water Supplies Department



水務署署長(陳仲勤代行)
for Director of Water Supplies



水務署
Water Supplies Department

總部 Headquarters

香港灣仔告士打道七號入境事務大樓 48 樓

Immigration Tower, 7 Gloucester Road, Wan Chai, Hong Kong

本署
Our ref.
來函檔號
Your ref.



J21/18 Pt.1 T/J(1090)

電話

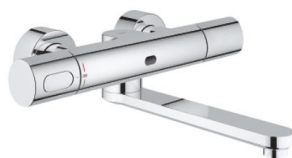
Tel. :

傳真

Fax.

: 2824 0578

1 November 2018



Dear Sir,

**Approval of "GROHE" Sensor Mixer
(General Acceptance No. C20180731)**

Your letter ref. WRC/1958 dated 20 September 2018 refers.

Having considered the test report ref. J23230A issued on 13 August 2018 by Nutek Systems (HK) Ltd., this Authority accepts that the fitting described below complies with, and its use when correctly installed does not contravene, the Waterworks Ordinance and Regulations.

Name of Manufacturer: Grohe AG
Country of Origin: Germany
Brand: Grohe
Details of Fitting: 1/2" Infra-red electronic basin mixer
Model: 36332000
Body Markings: 
Expiry Date: 8 August 2023



This Authority hereby permits the use of the above fitting in fresh water plumbing systems subject to full adherence to Waterworks installation requirements. In particular, you are required to draw your customers' attention to the following requirement-

"The cold water supply to the fitting shall be drawn from the same source that supplies the hot water apparatus so as to provide a balanced pressure and to obviate the risk of scalding in the event of a restriction or failure in the water supply."

"A stop cock or gate valve must be installed at the upstream of the fitting for manual isolation of water supply." AND

"The main voltage operated sensor valve should comply with the electricity safety regulation for applications in bathroom, toilet etc."

A condition of this acceptance is that the fitting to be installed shall be replicas of the sample as certified by the testing agent mentioned above and without modifications. This acceptance may be withdrawn at any time if the standard of the fitting installed fail to meet that of the approved sample or if the fitting is found to be unsuitable for use in fresh water plumbing systems.

This acceptance is only applicable to the main body of the fitting, unless other specified.

For the use of the fitting in any project, the General Acceptance Number of this letter must be quoted as a means of identification of acceptance of the fitting by this Authority.

Should you have any enquiries, please contact our Engineer Mr. Terry KUNG at tel. no. 3583 4086.

Yours faithfully,



(CHAN Chung-kun)

for Director of Water Supplies

Encl.

c.c. WSD 3321/1/82] - without catalogue
 ME/MC] - with soft copy only